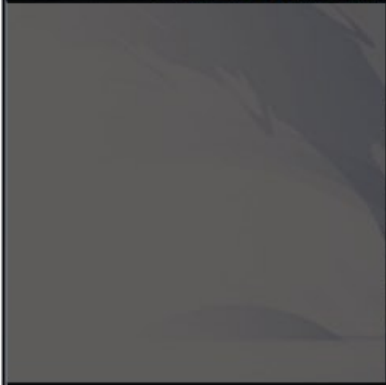




# Walter J. Porter Elementary School

## Case Study



The Right Space,  
At The Right Time,  
For The Right Price™



### Project Team Members:

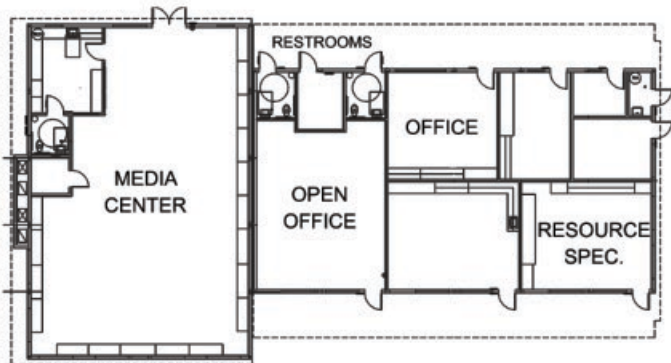
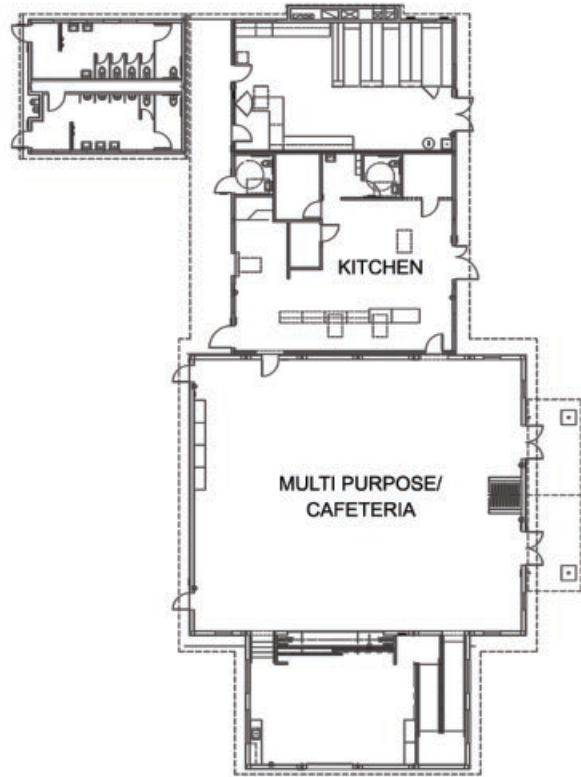
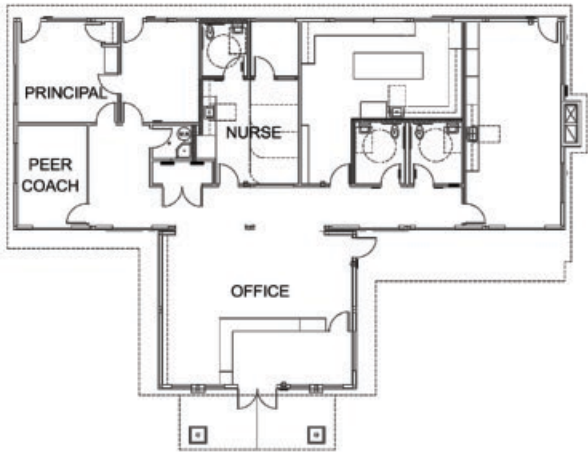
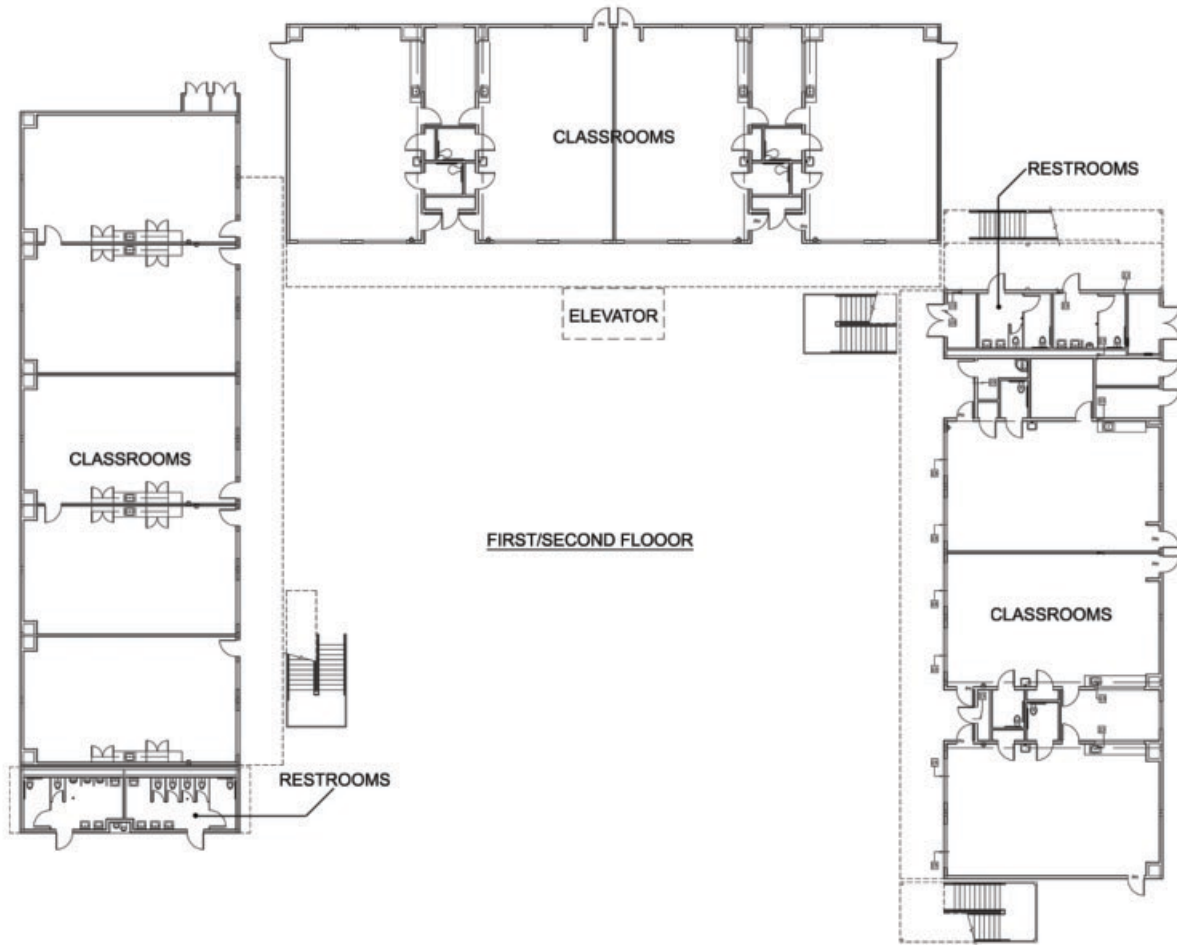
Modtech Holdings, Inc.  
R.J. Maus Architects  
Soltek Pacific

### Project Overview

The Walter Porter Elementary School project consists of twin campuses on adjacent sites. The project began with the South campus in late January 2005. The modular design of the project allowed site work and building manufacturing to occur simultaneously resulting in dramatically reduced construction time. The South campus opened on January 17, 2006, within one year of breaking ground. Due to the success of the South campus the district decided to build the second campus which is expected to open in January 2007.

Each campus is 44,345 sq ft and includes 26 classrooms, multipurpose room, library/media center, lunch shelter, elevator, kitchen, faculty lounge, workroom and administrative center. The two story classroom buildings include a unique 4:12 roof with light gauge steel trusses and parapet walls to hide the roof mounted HVAC units. The general areas such as administrative offices are contained within the one story buildings. The multipurpose building was constructed using prefabricated modular roof sections in conjunction with a slab on grade foundation. All buildings include upgrades such as plaster exteriors, custom kynar color windows, clerestory recessed windows, standing seam roofs and concrete foundations





West Region

Southwest Region

South Central Region

Southeast Region

Toll free 1-888-929-0998 · [www.modtech.com](http://www.modtech.com)